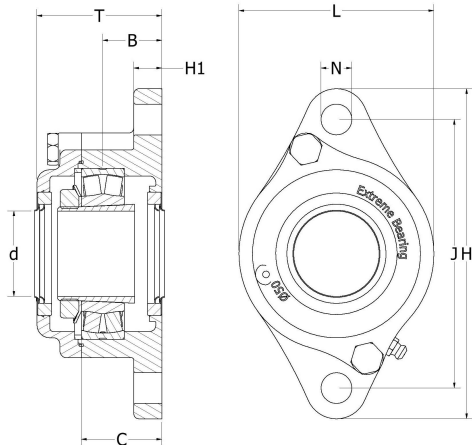


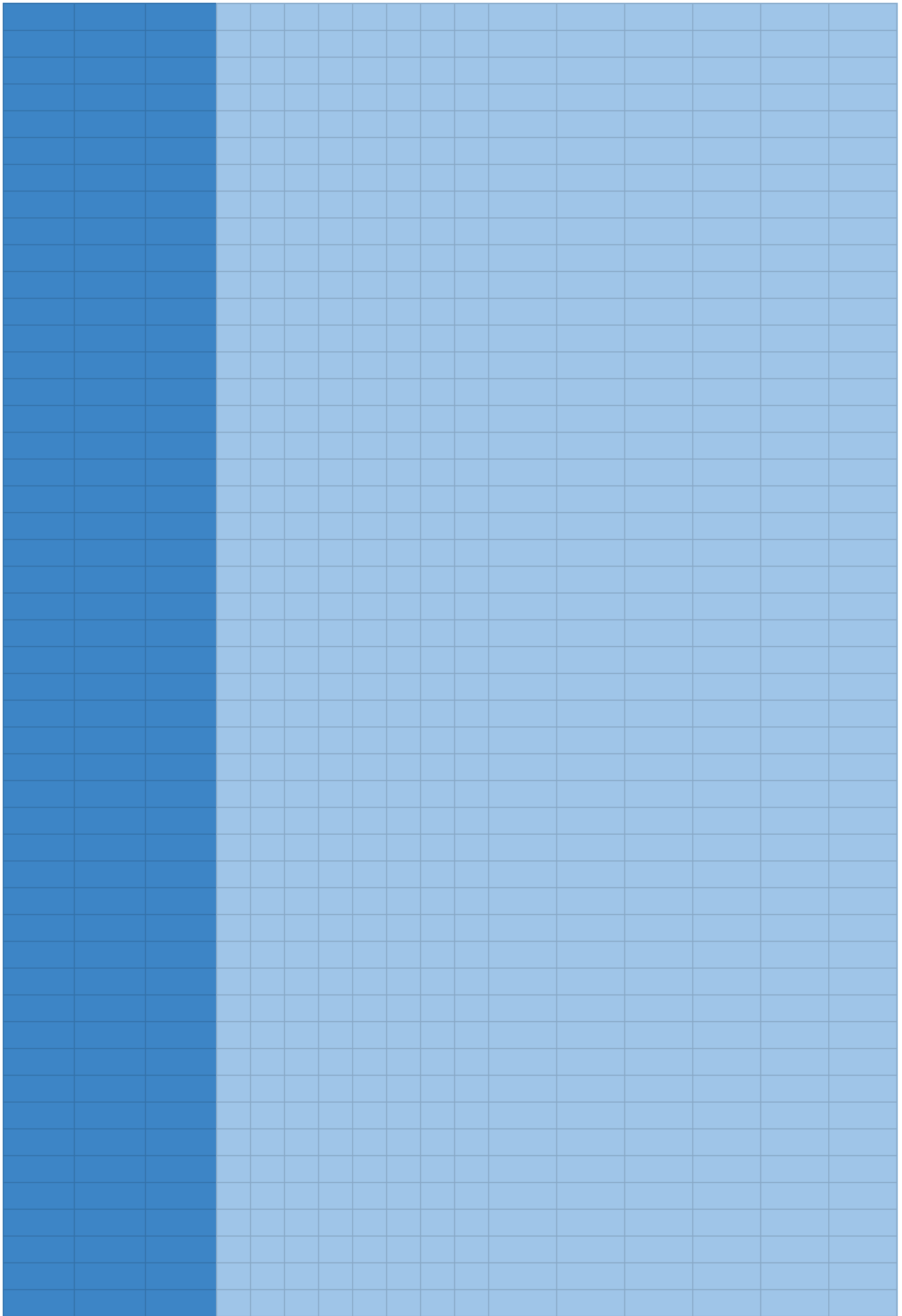


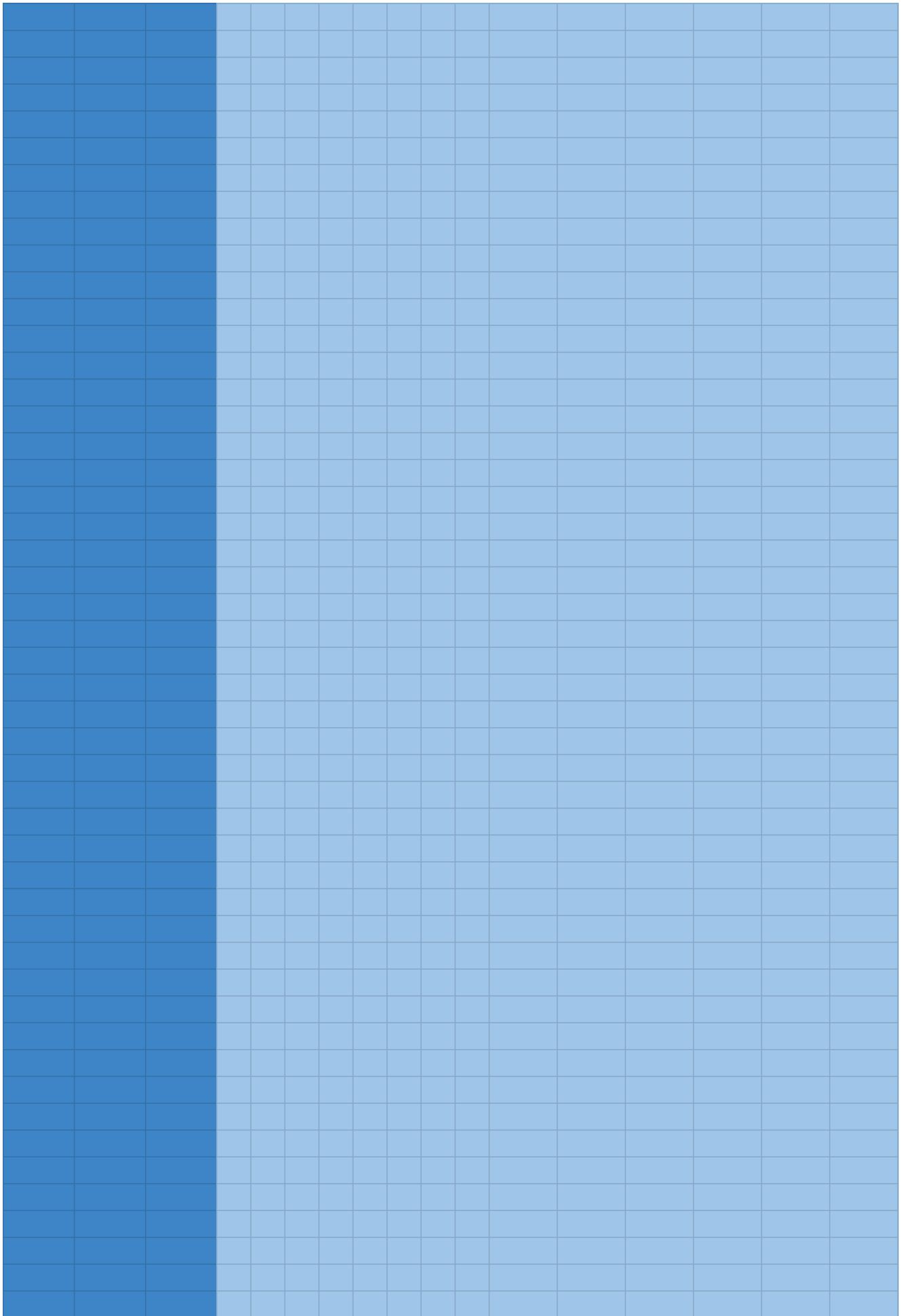
EXWT 2-Bolt ound flange bearing

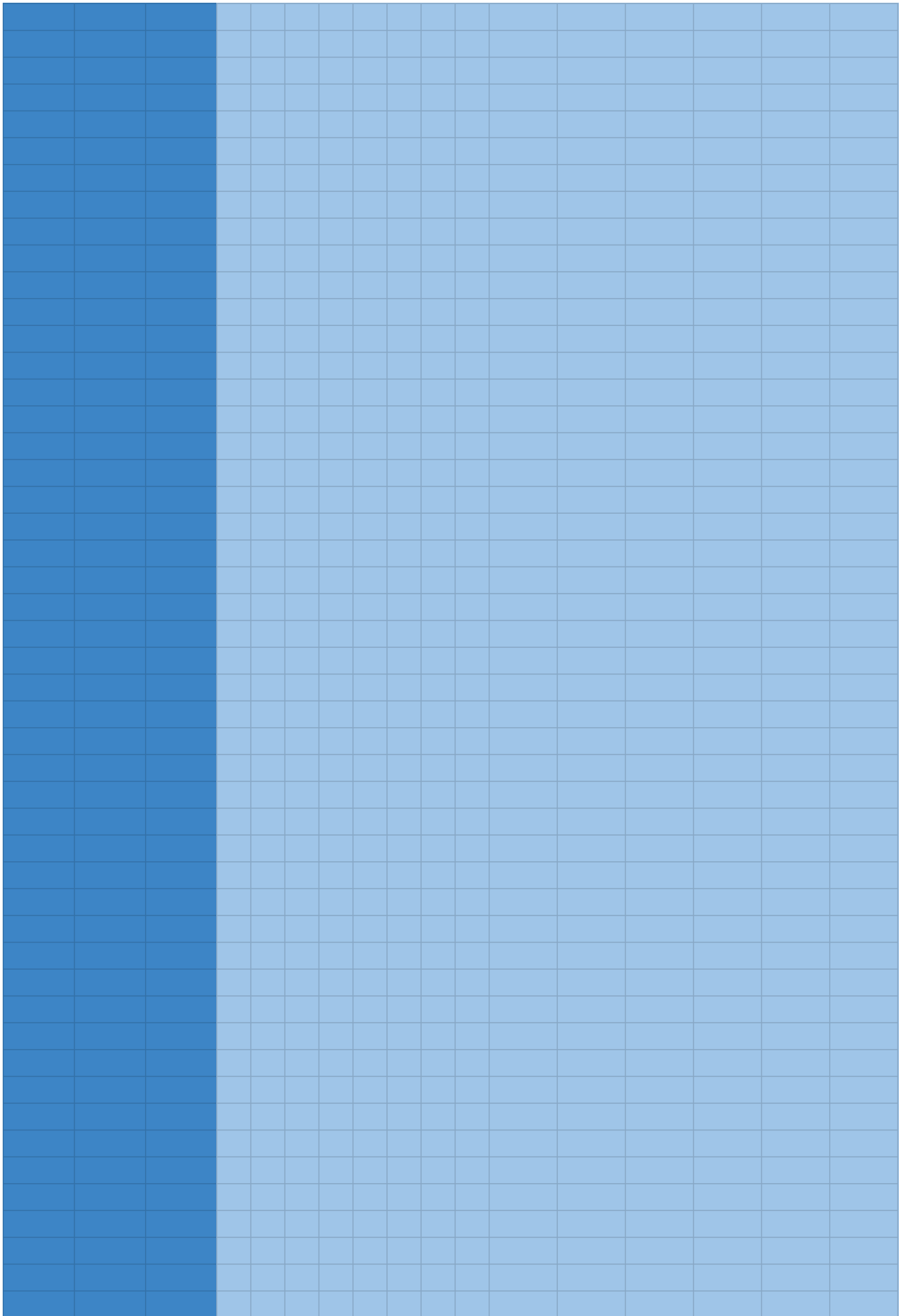
Double spherical roller bearing + adapter

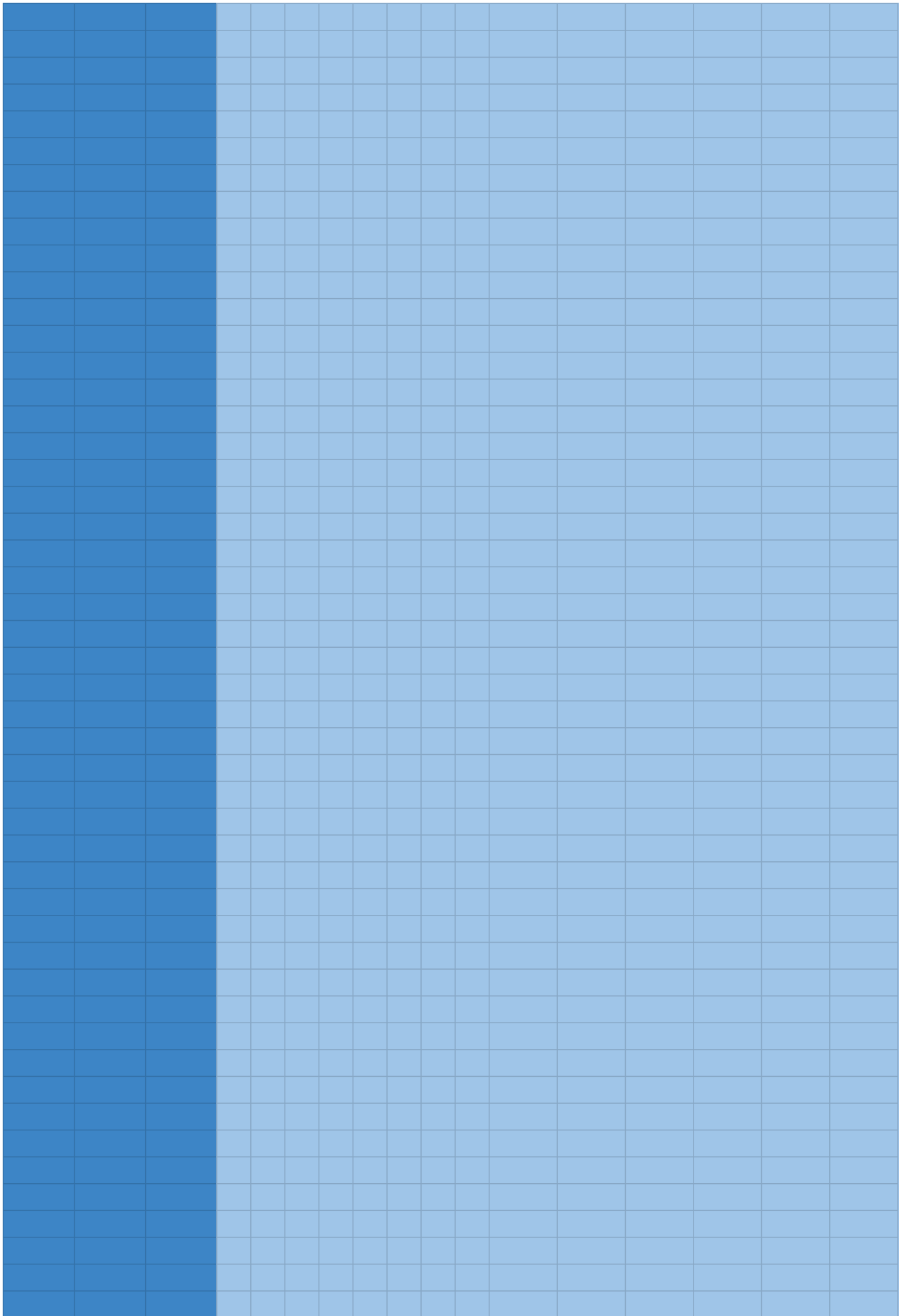


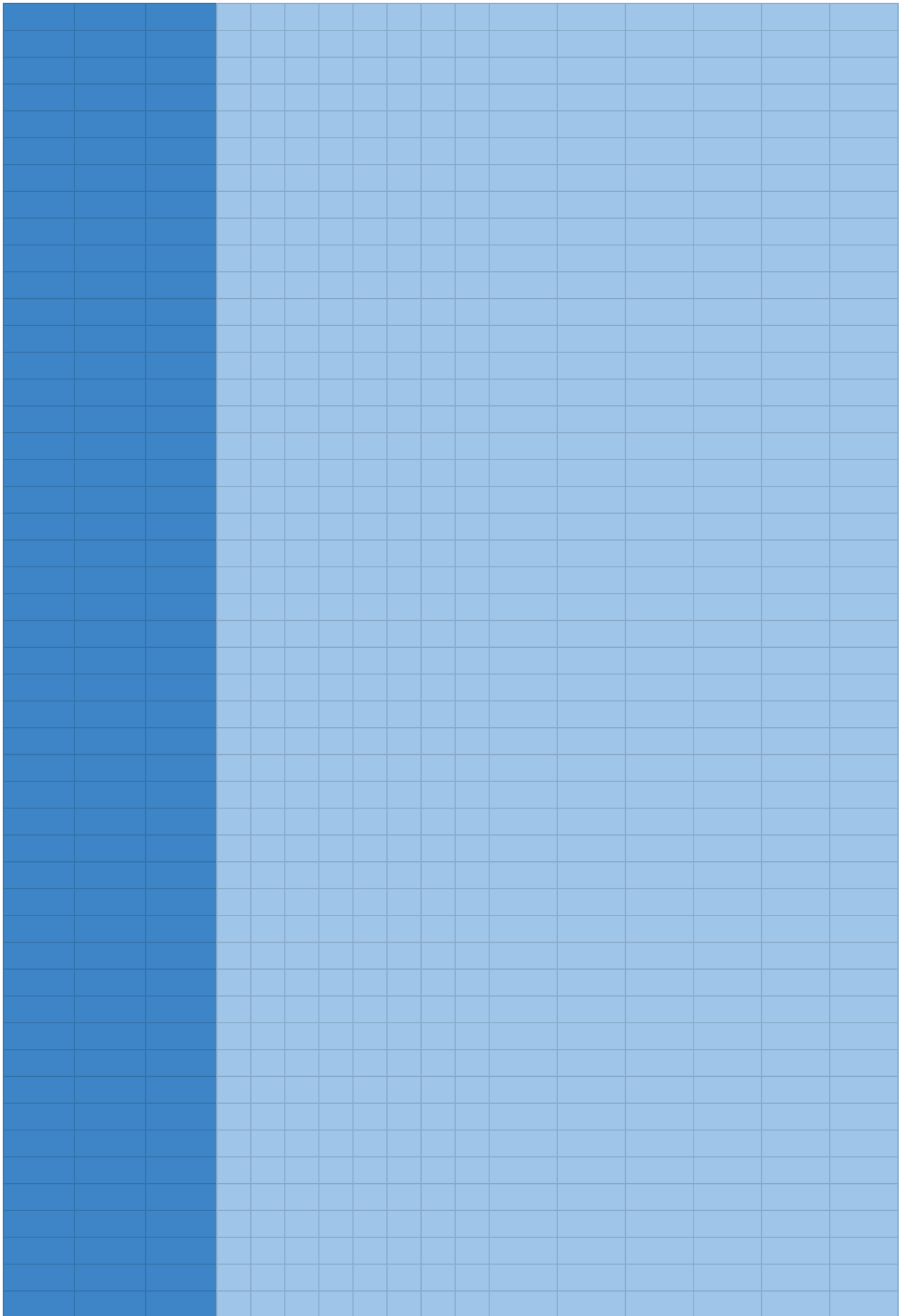
Typ	d		B	C	T	H1	J	L	H	N	Grease hole	Basic load rating in KN		Limiting speed RPM	Axial movement	Seal seat
	Metric	Imperial										Dynamic	Static			
EXWT-024	23,81	15/16	25	44	54	12	99	73	122	12	M6	59	62	6300	3,5	42x7
EXWT-025	25	62/63														
EXWT-A25	25,4	1														
EXWT-028	28,57	1 1/8	26	48	60	12	117	84	140	12	M6	81	88	5300	3,5	47x7
EXWT-030	30	1 2/11														
EXWT-A30	30,16	1 3/16														
EXWT-032	31,75	1 1/4	28	50	60	12	130	93	156	13	M6	88	100	4800	3,5	52x7
EXWT-A35	34,9	1 3/8														
EXWT-035	35	1 17/45														
EXWT-037	36,51	1 7/16	28	51	62	12	144	98	172	14	M6	95	105	4500	3,5	62x7
EXWT-038	38,1	1 1/2														
EXWT-040	40	1 23/40														
EXWT-043	42,86	1 11/16	32	57	69	12	149	106	179	16	M6	100	120	4000	4	62x7
EXWT-044	44,45	1 3/4														
EXWT-045	45	1 3/4														
EXWT-049	49,2	1 15/16	34	60	73	12	157	114	189	18	M6	120	140	3800	4	72x7
EXWT-050	50	1 31/32														
EXWT-051	50,8	2														

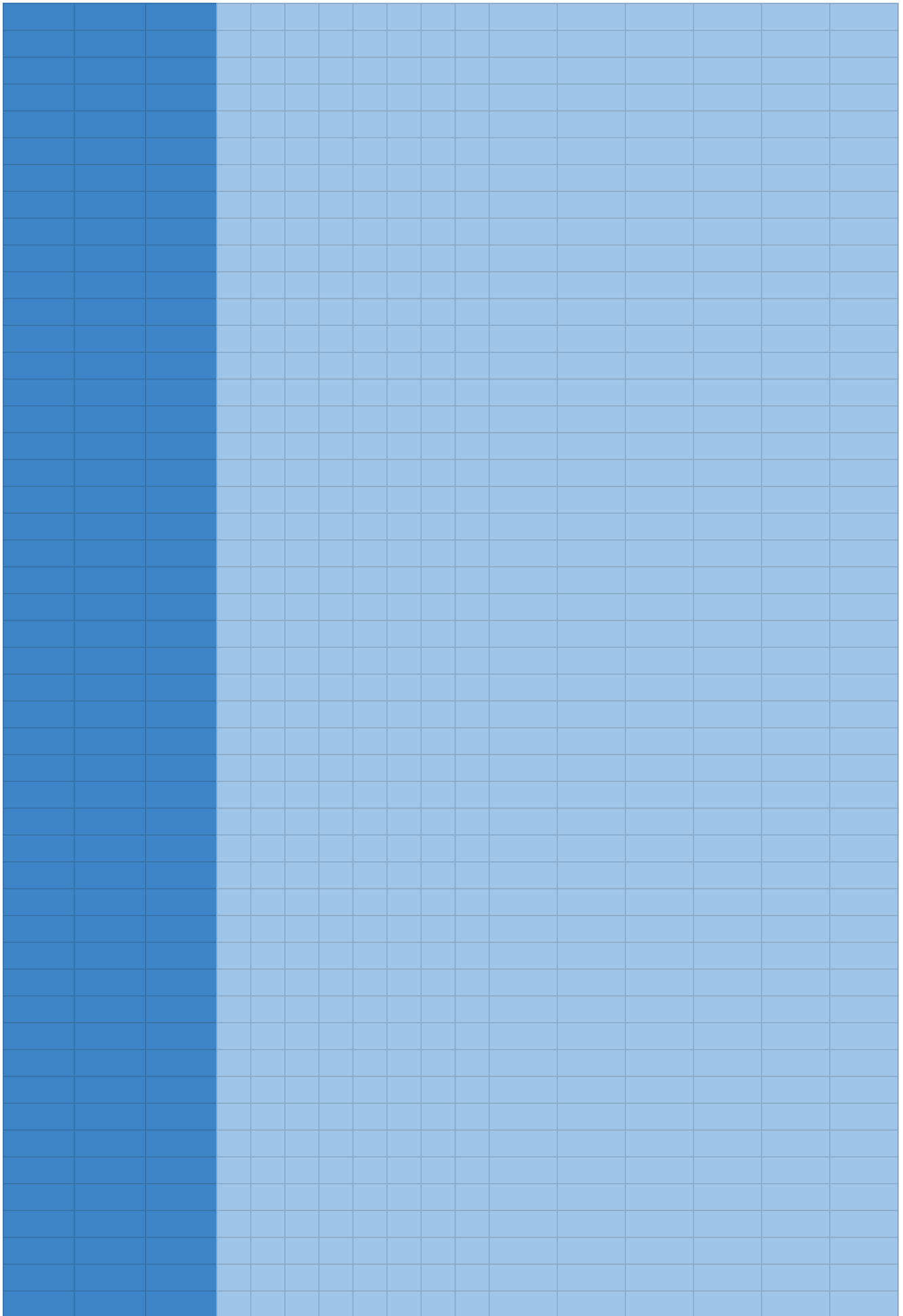


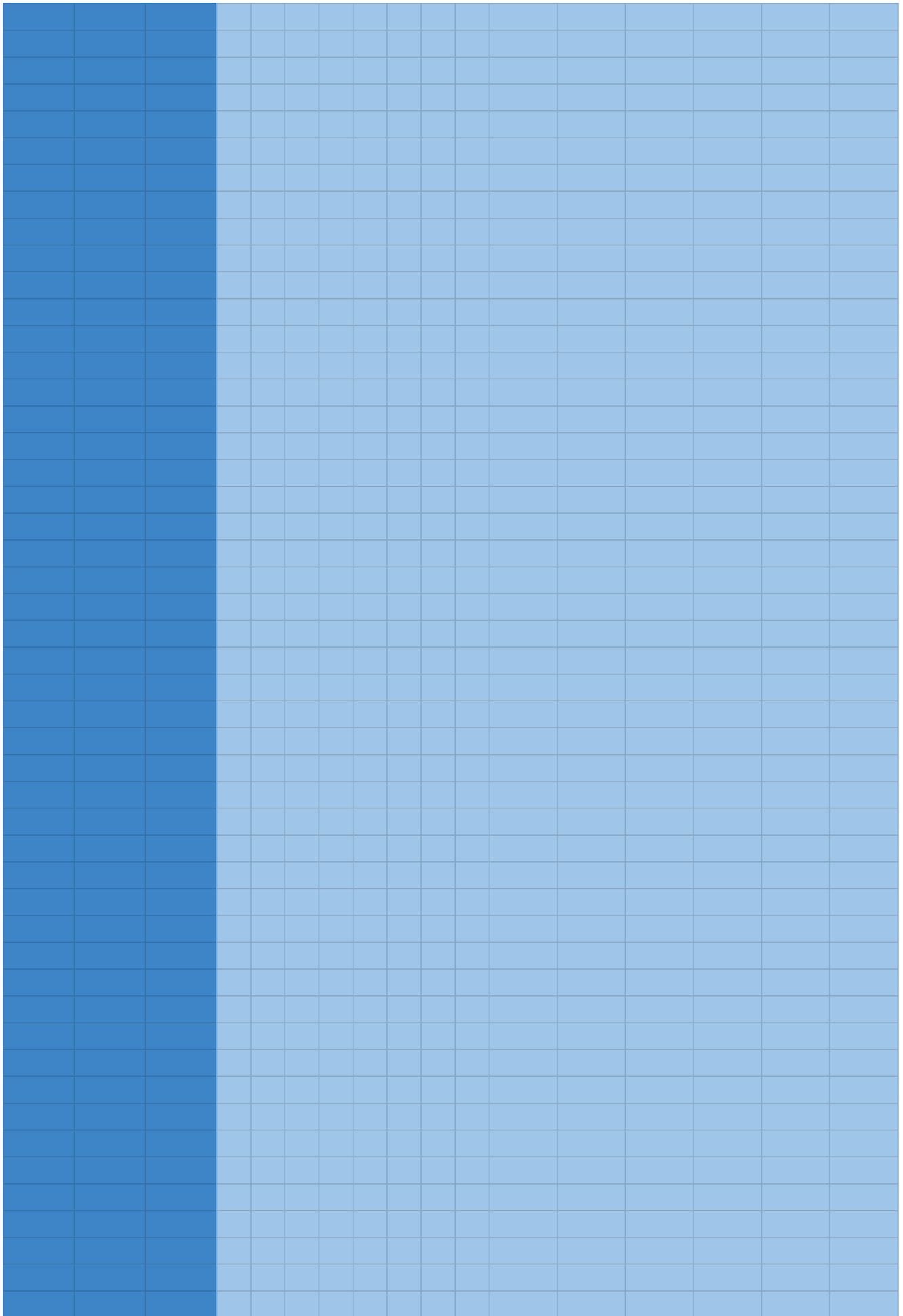


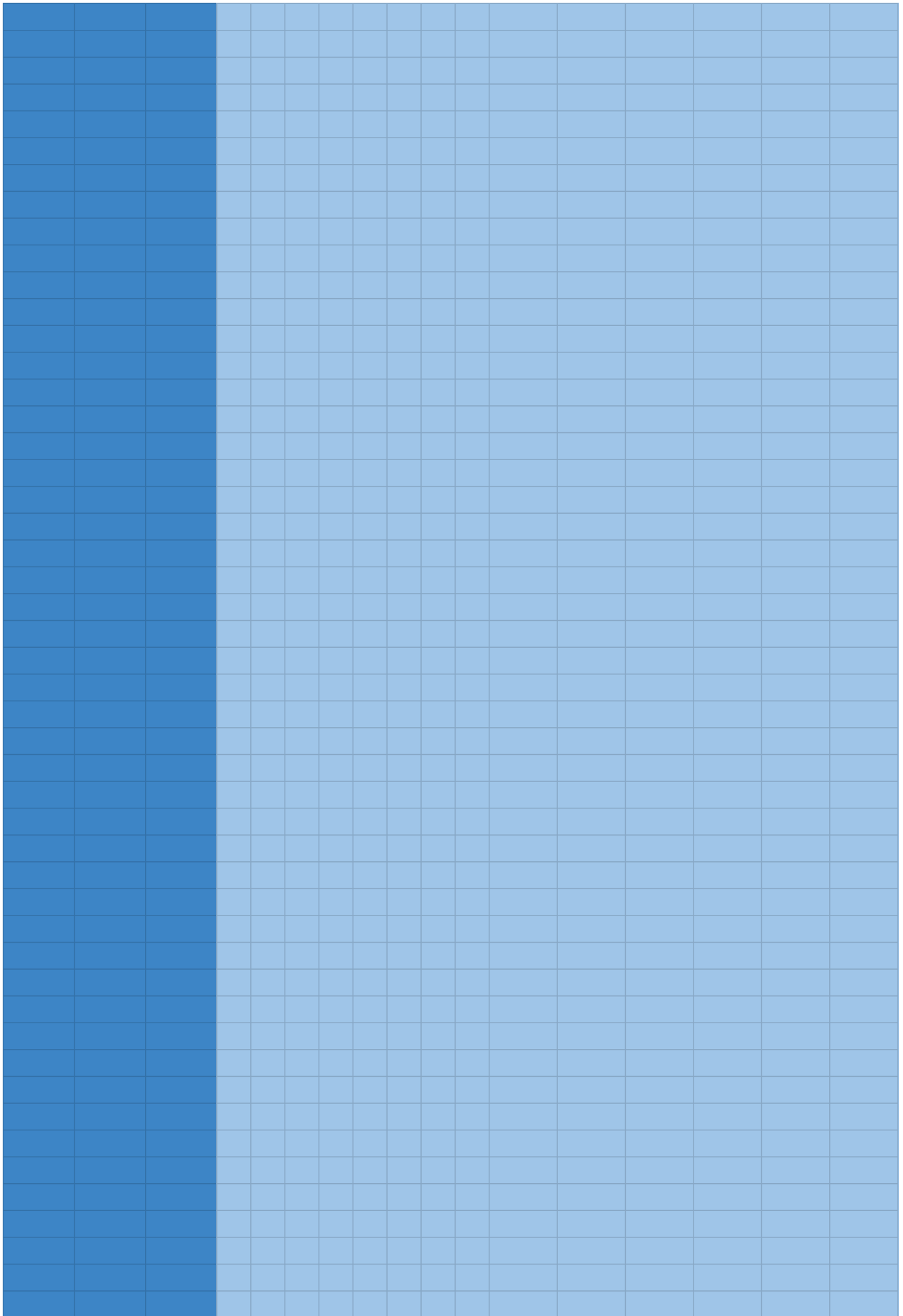


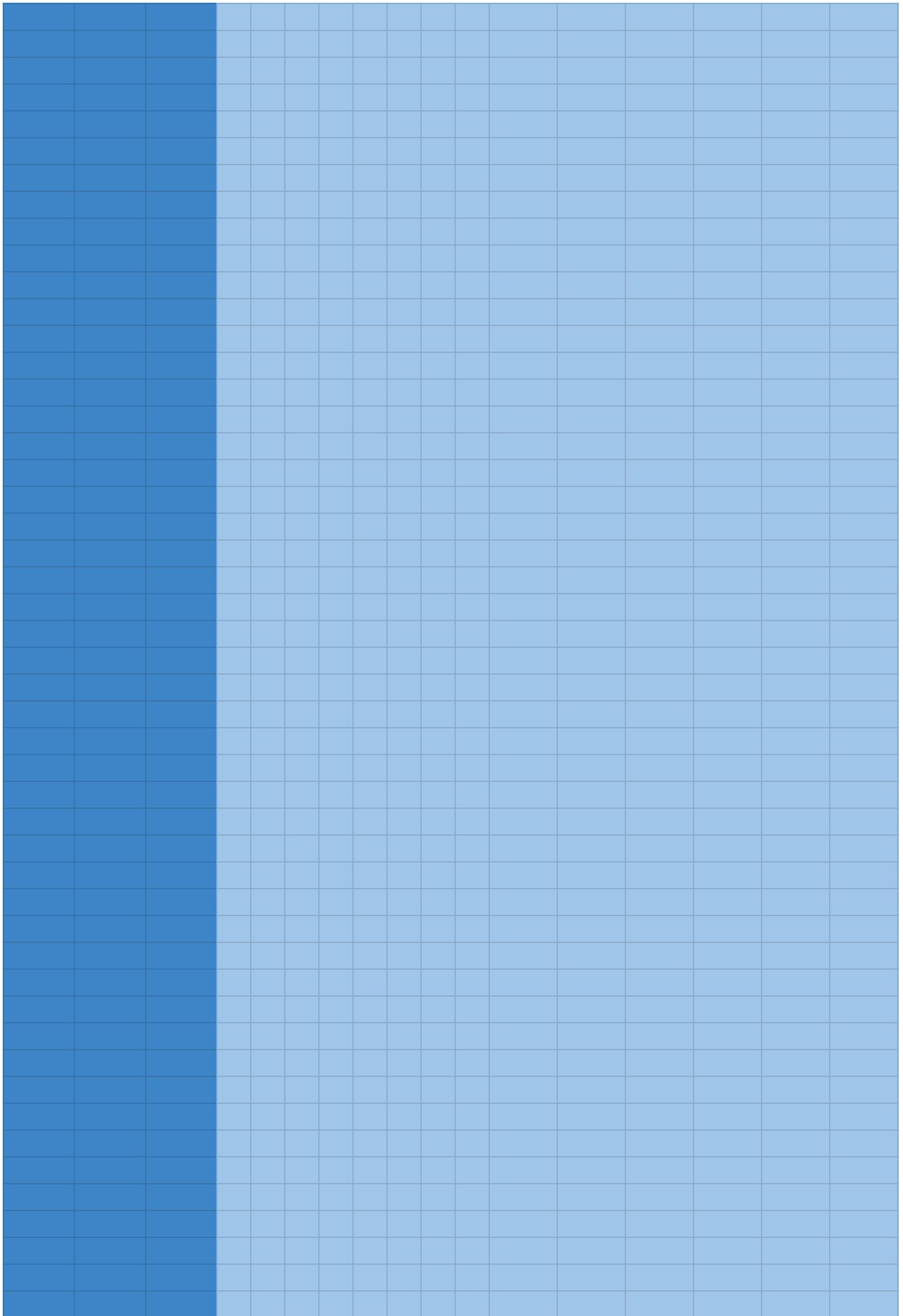


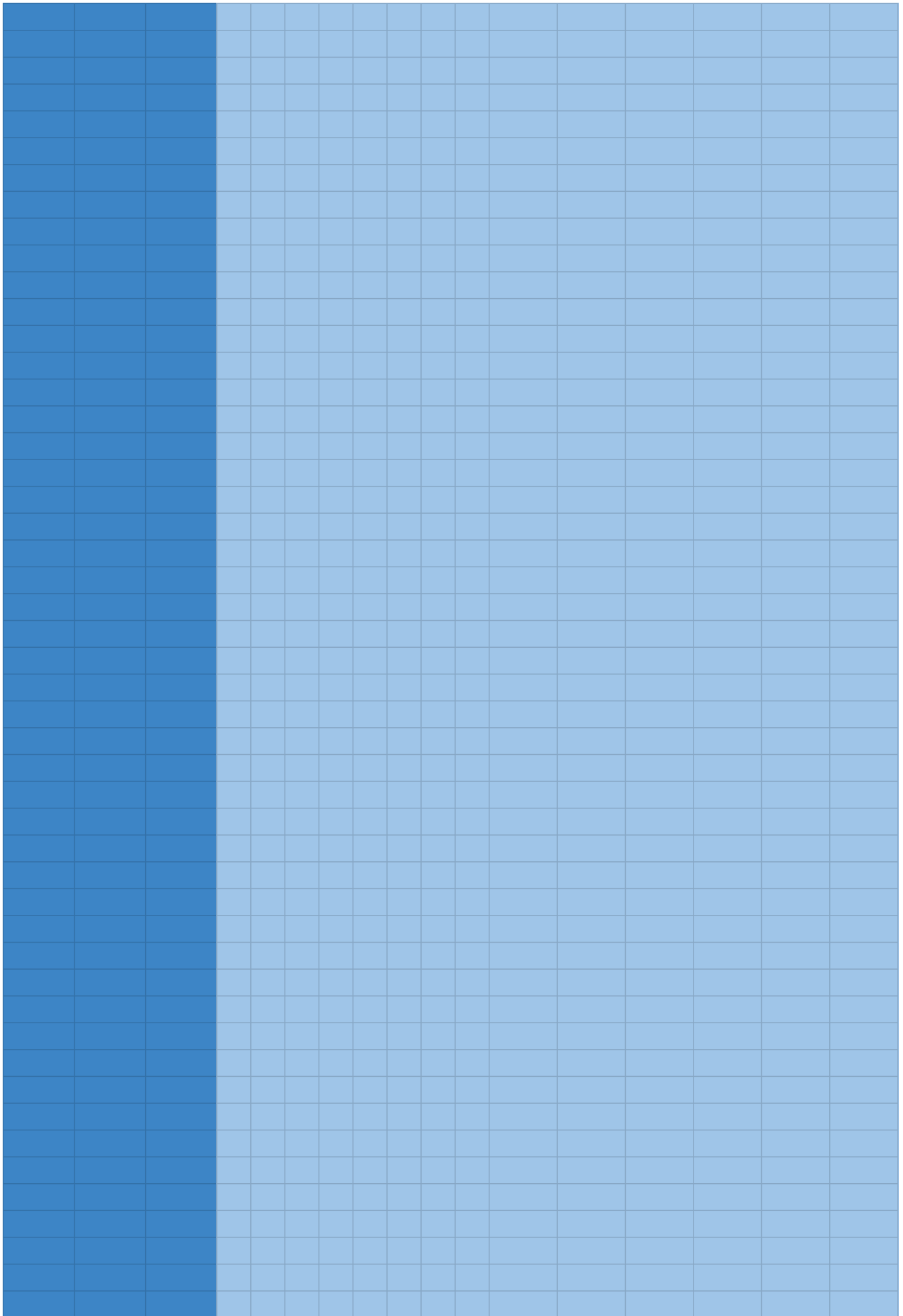


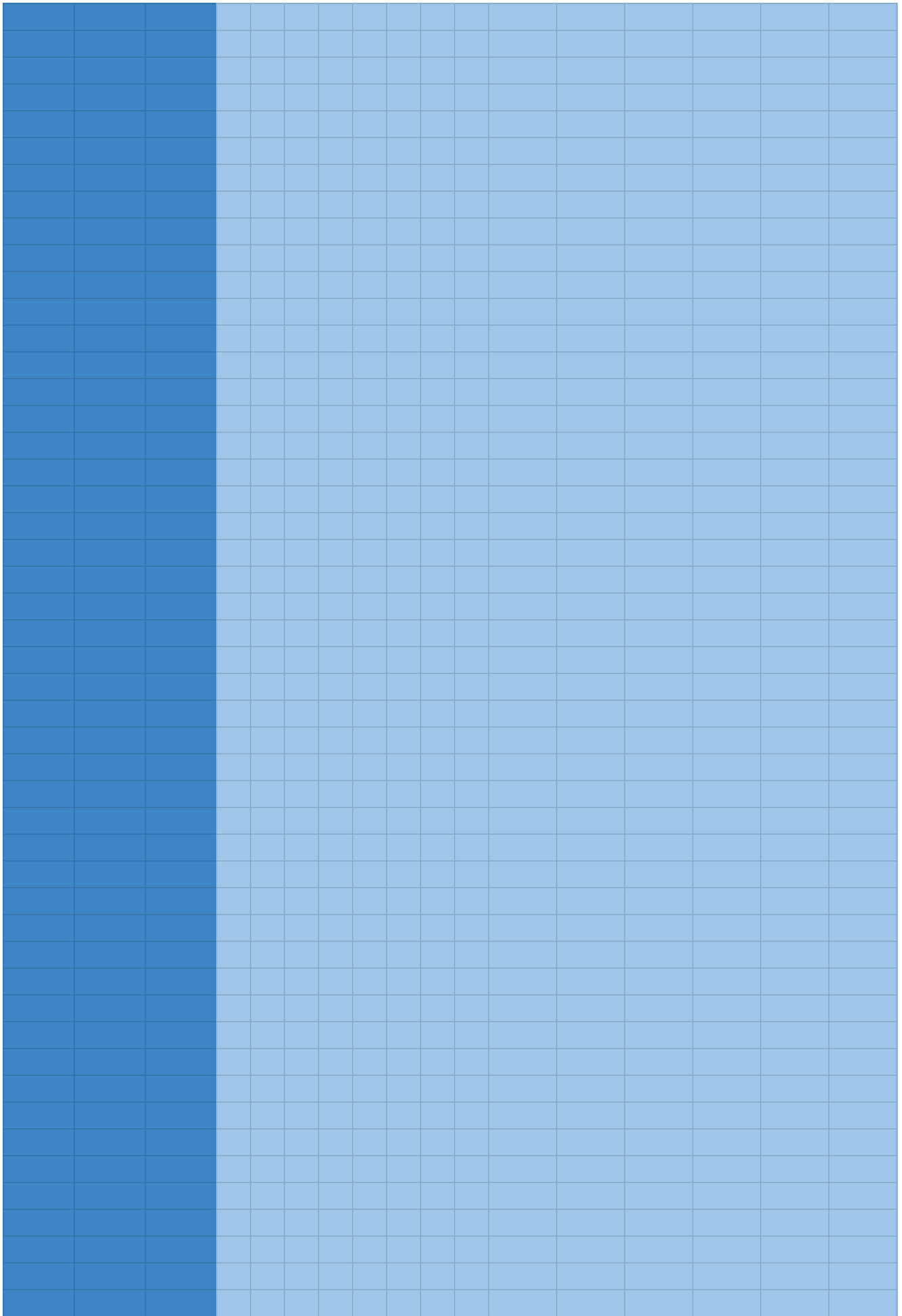


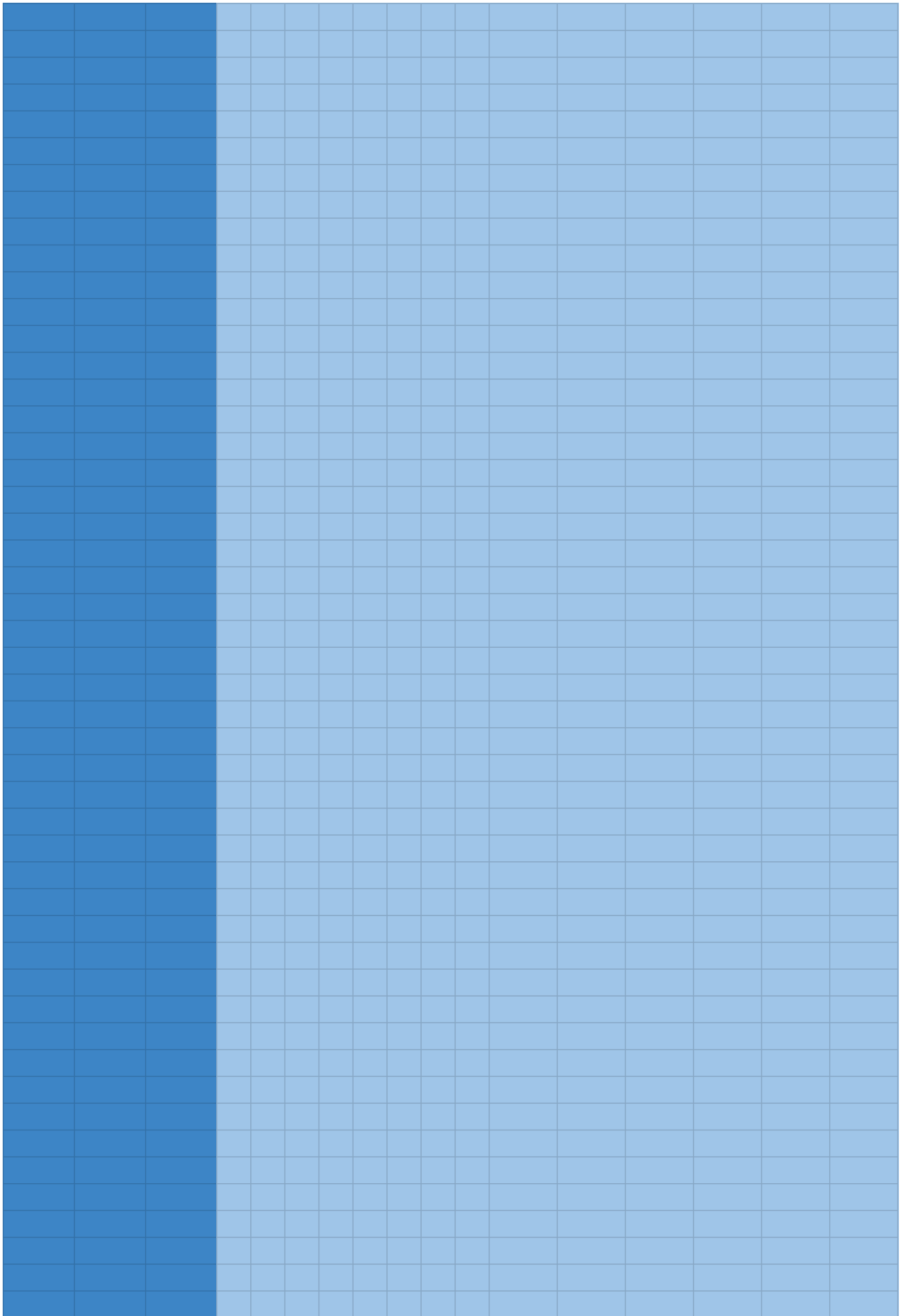


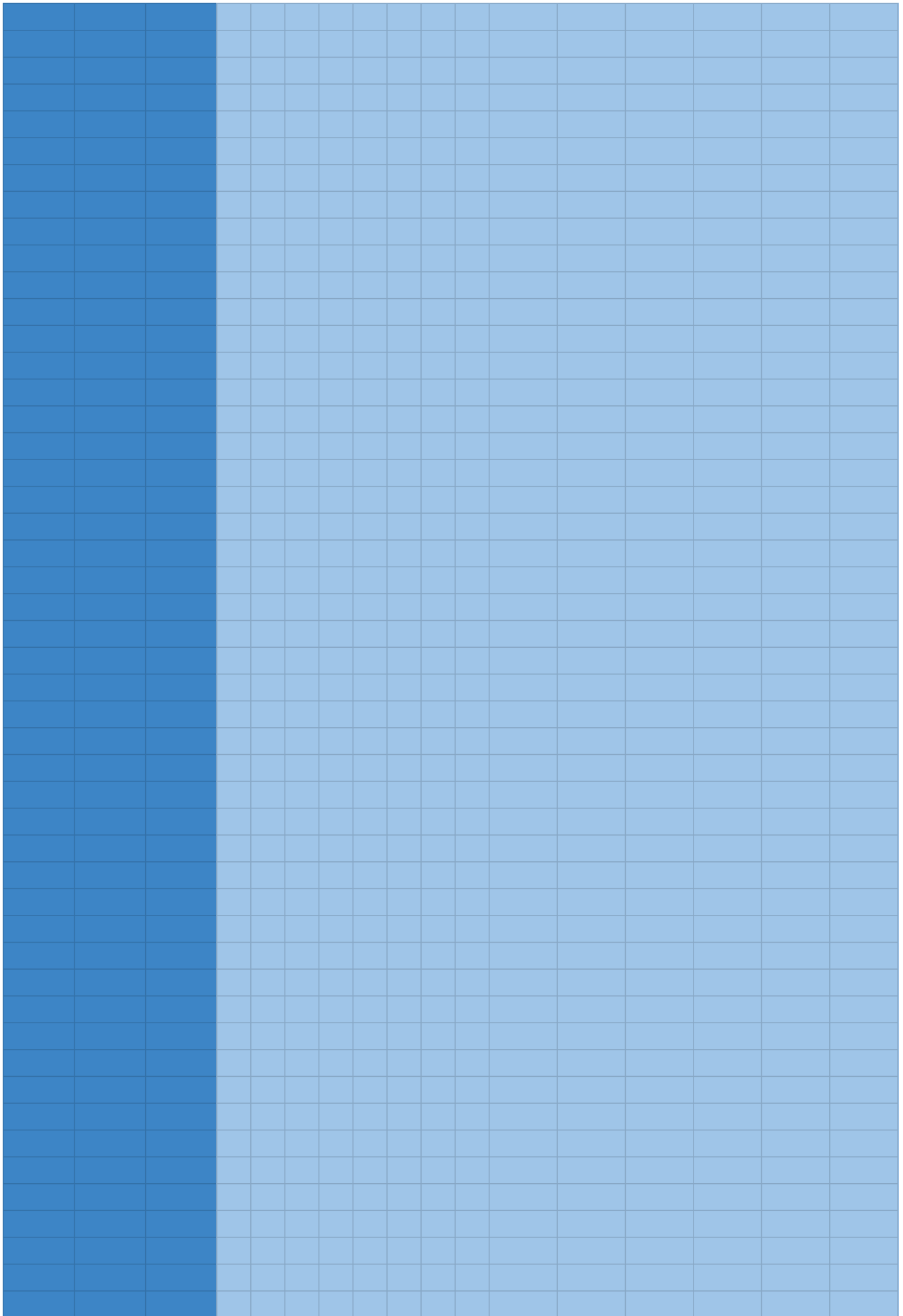


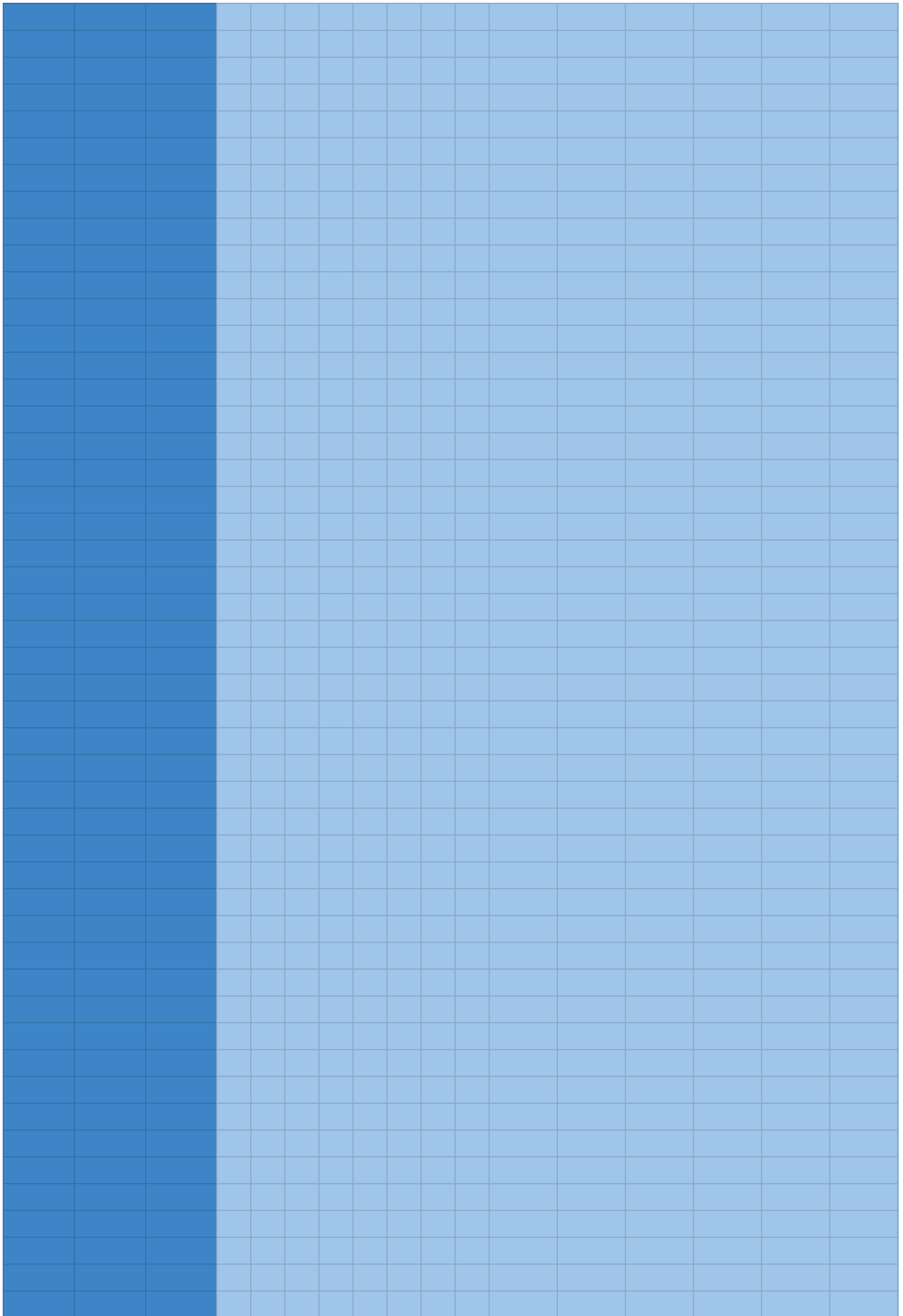


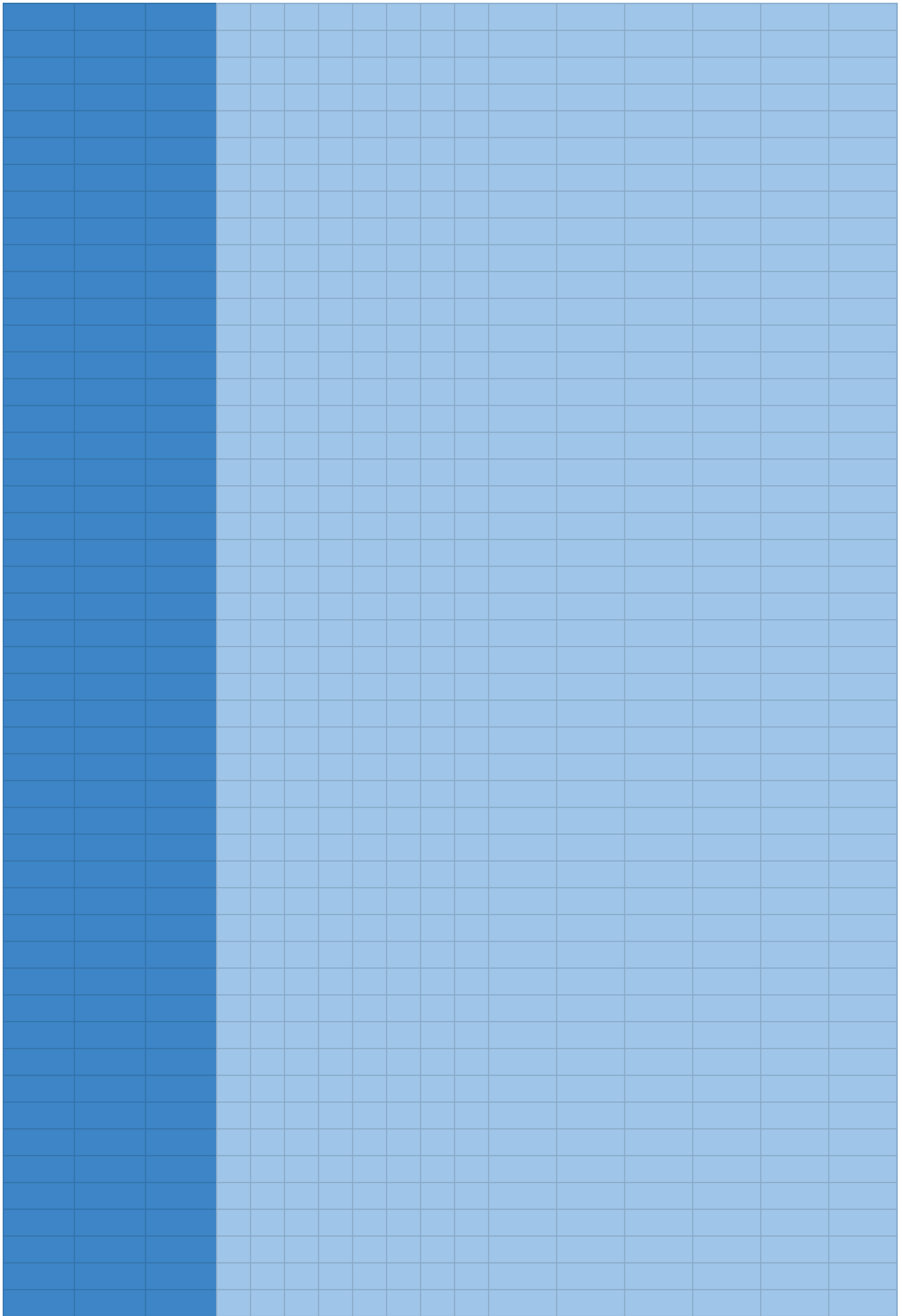


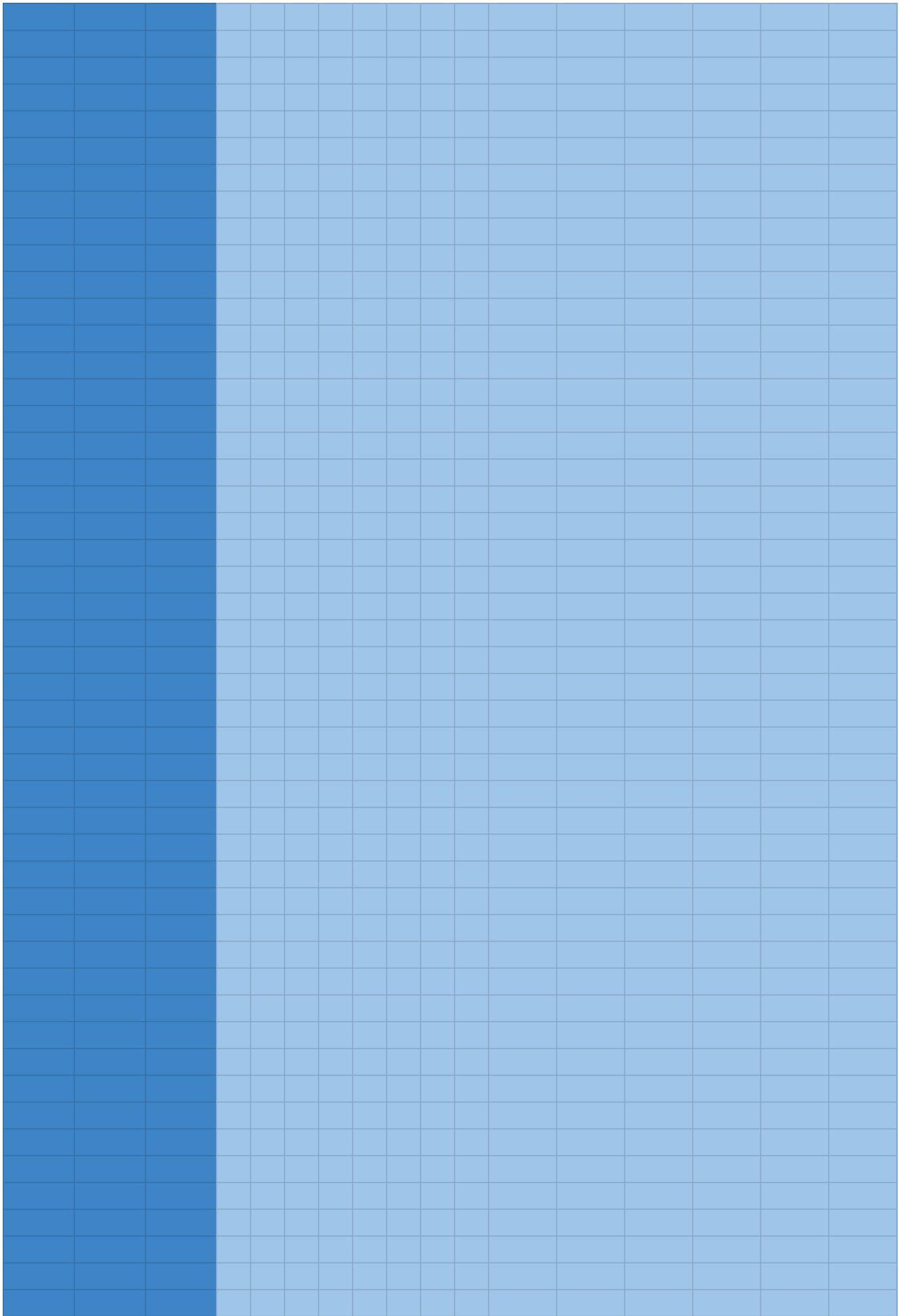


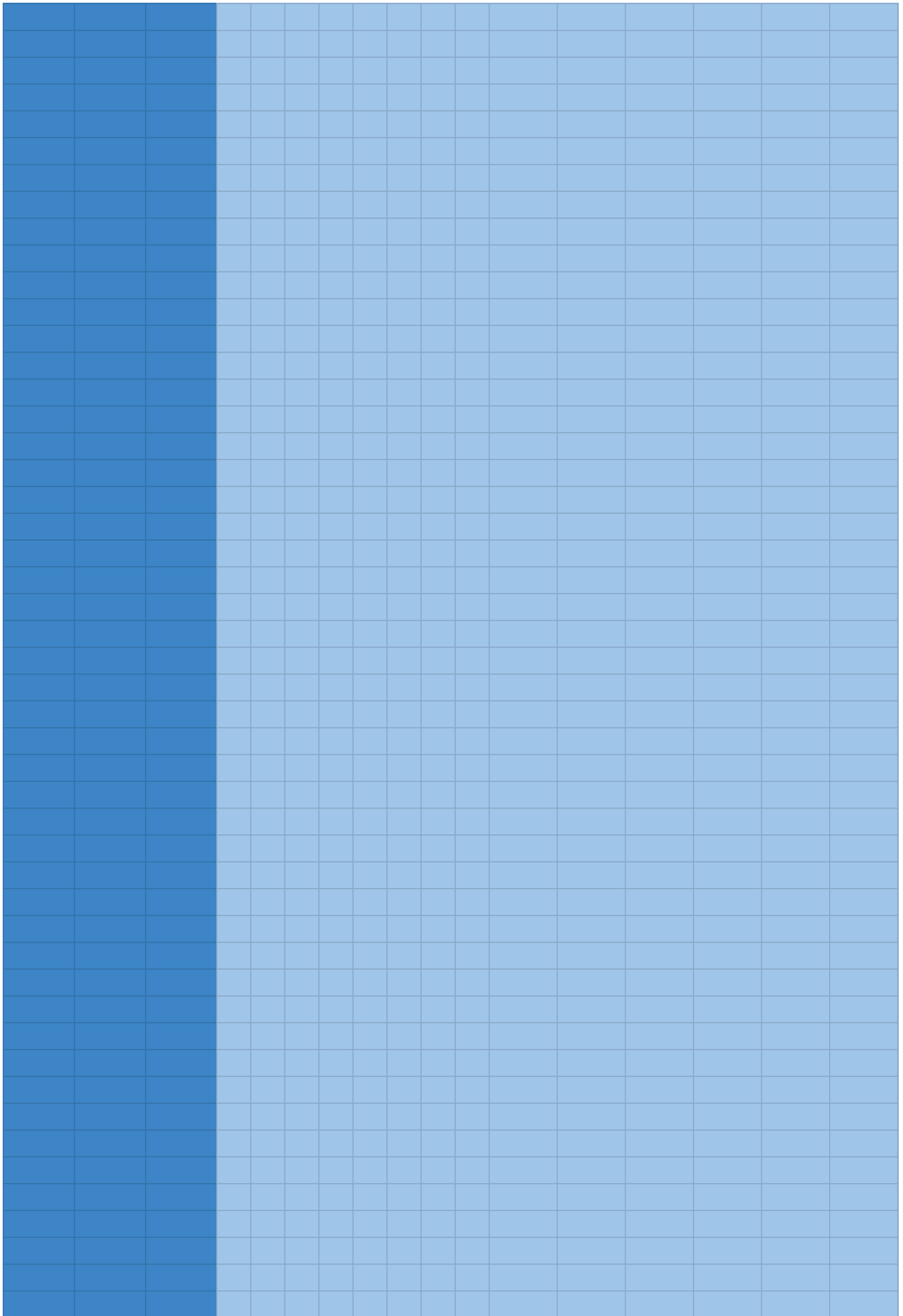


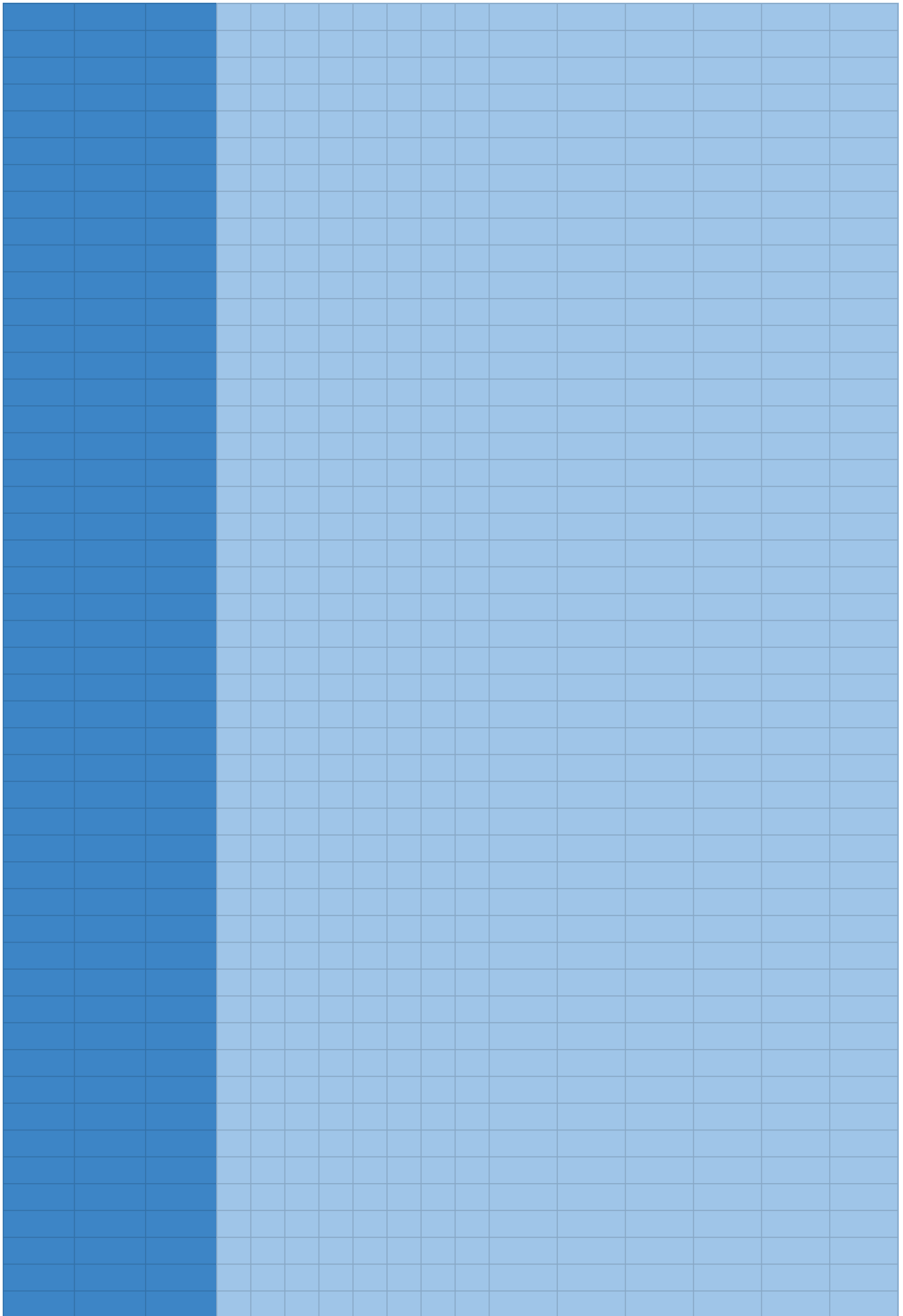


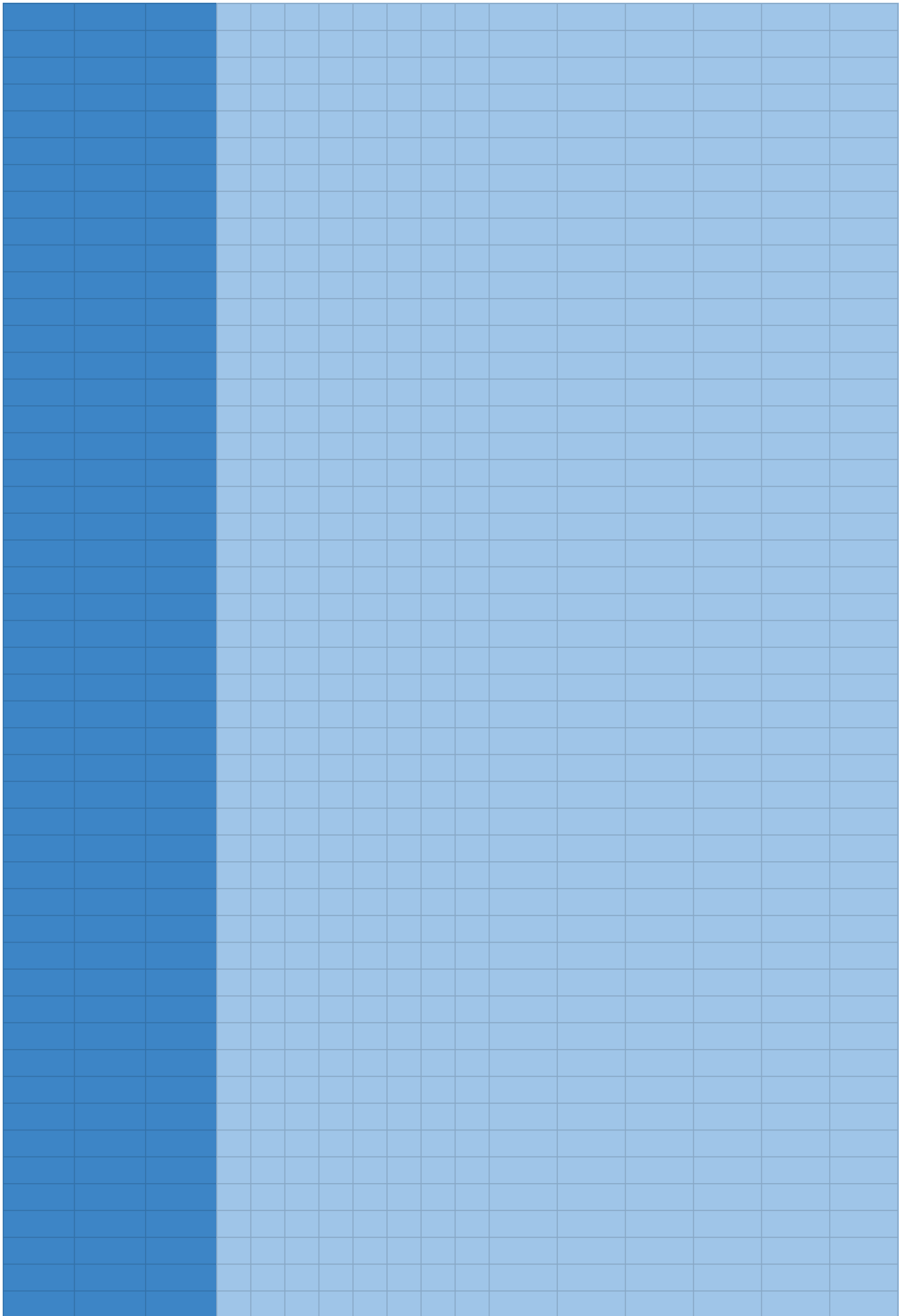


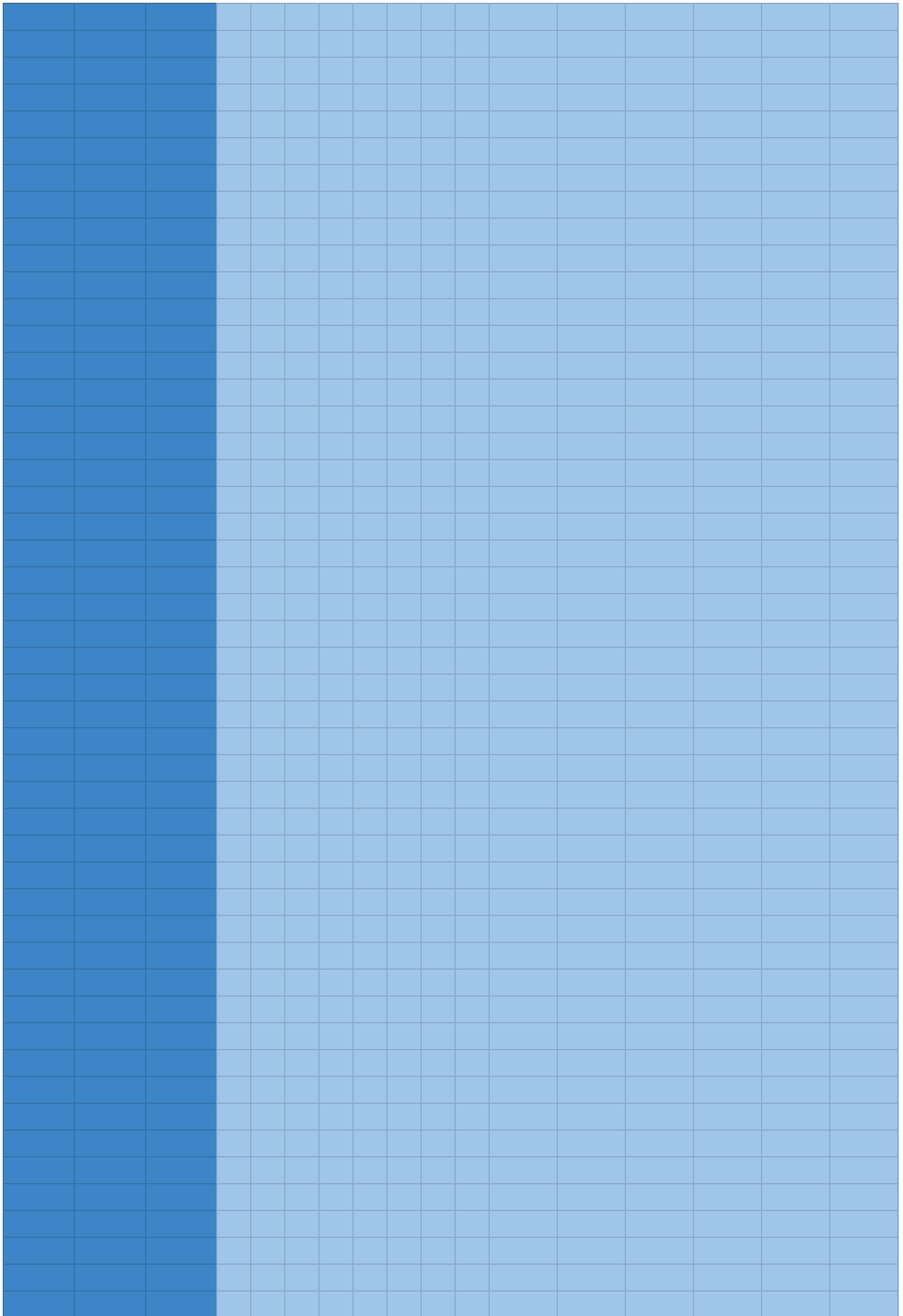


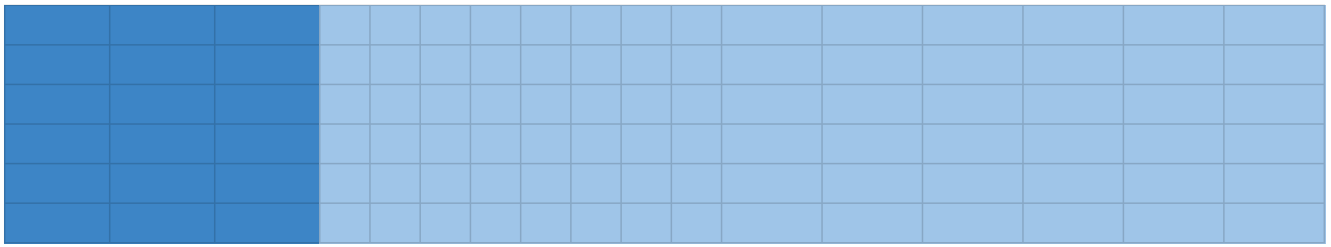








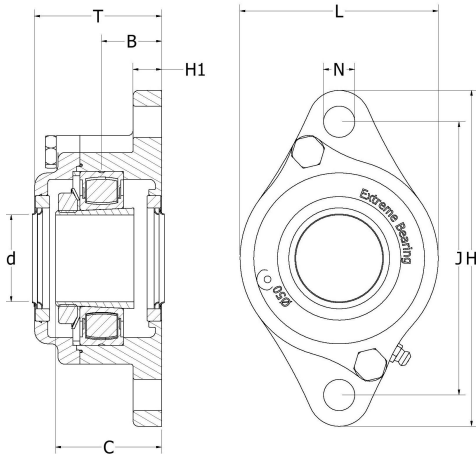






EXWE 2-Bolt ound flange bearing

Single row spherical roller bearing + adapter

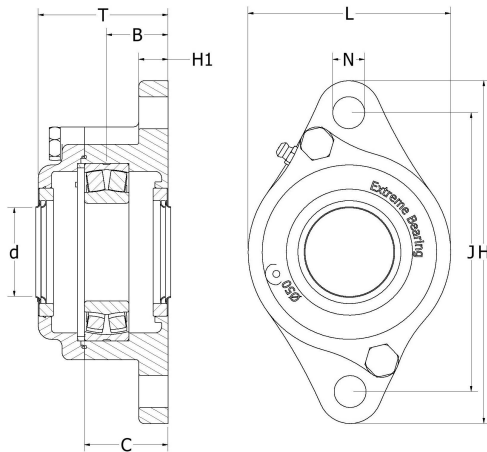


Typ	d		B	C	T	H1	J	L	H	N	Grease hole	Basic load rating in KN		Limiting speed RPM	Axial movement	Seal seat
	Metric	Imperial										Dynamic	Static			
EXWE-024	23,81	15/16	25	44	54	12	99	73	122	12	M6	50	55	6300	3,5	42x7
EXWE-025	25	62/63														
EXWE-A25	25,4	1														
EXWE-028	28,57	1 1/8	26	48	60	12	117	84	140	12	M6	68	78	5300	3,5	47x7
EXWE-030	30	1 2/11														
EXWE-A30	30,16	1 3/16														
EXWE-032	31,75	1 1/4	28	50	60	12	130	93	156	13	M6	77	88	4800	3,5	52x7
EXWE-A35	34,9	1 3/8														
EXWE-035	35	1 17/45														
EXWE-037	36,51	1 7/16	28	51	62	12	144	98	172	14	M6	80	95	4500	3,5	62x7
EXWE-038	38,1	1 1/2														
EXWE-040	40	1 23/40														
EXWE-043	42,86	1 11/16	32	57	69	12	149	106	179	16	M6	83	102	4000	4	62x7
EXWE-044	44,45	1 3/4														
EXWE-045	45	1 3/4														
EXWE-049	49,2	1 15/16	34	60	73	12	157	114	189	18	M6	102	125	3800	4	72x7
EXWE-050	50	1 31/32														
EXWE-051	50,8	2														



EXWTC 2-Bolt ound flange bearing

Double spherical cylindrical roller bearing



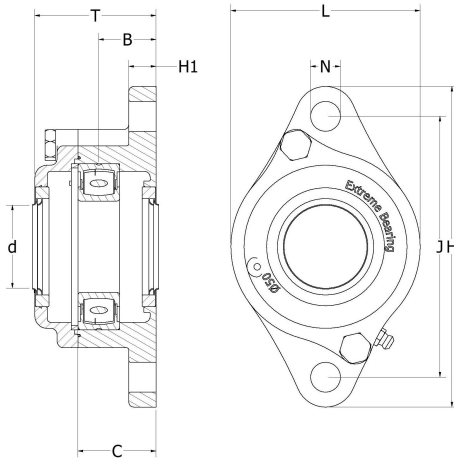
Used tolerance for shaft diameter is according ISO Passing System m5. With a wider passing, loctite is recommended.

Typ	d		B	C	T	H1	J	L	H	N	Grease hole	Basic load rating in KN		Limiting speed RPM	Axial movement	Seal seat
	Metric	Imperial										Dynamic	Static			
EXWTC-025	30	1 2/11	25	44	54	12	99	73	122	12	M6	59	62	6300	3,5	42x7
EXWTC-030	35	1 17/45	26	48	60	12	117	84	140	12	M6	81	88	5300	3,5	47x7
EXWTC-035	40	1 23/40	28	50	60	12	130	93	156	13	M6	88	100	4800	3,5	52x7
EXWTC-040	45	1 3/4	28	51	62	12	144	98	172	14	M6	95	105	4500	3,5	62x7
EXWTC-045	50	1 31/32	32	57	69	12	149	106	179	16	M6	100	120	4000	4	62x7
EXWTC-050	55	2 1/6	34	60	73	12	157	114	189	18	M6	120	140	3800	4	72x7



EXWEC 2-Bolt ound flange bearing

Single row spherical cylindrical roller bearing

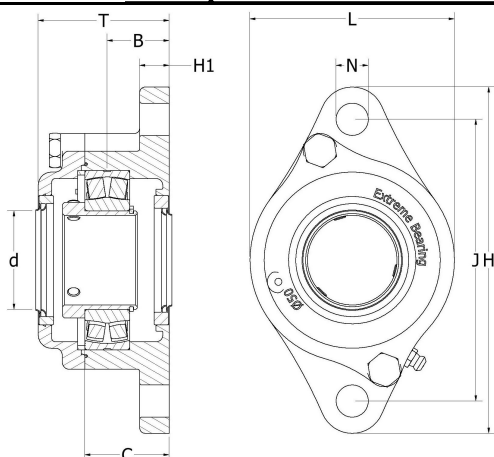


Used tolerance for shaft diameter is according ISO Passing System m5. With a wider passing, loctite is recommended.

Typ	d		B	C	T	H1	J	L	H	N	Grease hole	Basic load rating in KN		Limiting speed	Axial movement	Seal seat
	Metric	Imperial										Dynamic	Static	RPM		
EXWEC-025	30	1 2/11	25	44	54	12	99	73	122	12	M6	50	55	6300	3,5	42x7
EXWEC-030	35	1 17/45	26	48	60	12	117	84	140	12	M6	68	78	5300	3,5	47x7
EXWEC-035	40	1 23/40	28	50	60	12	130	93	156	13	M6	77	88	4800	3,5	52x7
EXWEC-040	45	1 3/4	28	51	62	12	144	98	172	14	M6	80	95	4500	3,5	62x7
EXWEC-045	50	1 31/32	32	57	69	12	149	106	179	16	M6	83	102	4000	4	62x7
EXWEC-050	55	2 1/6	34	60	73	12	157	114	189	18	M6	102	125	3800	4	72x7

EXWTV 2-Bolt ound flange bearing

Double spherical roller bearing with set screw mounting

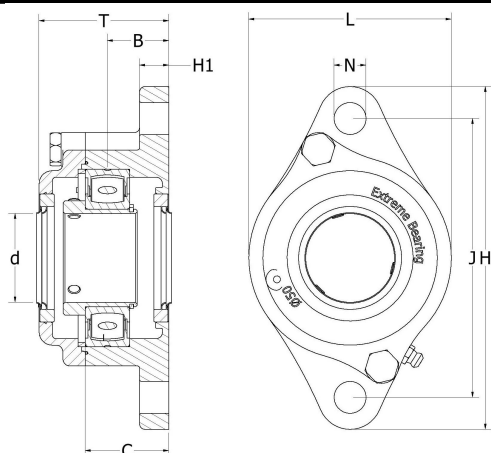


Typ	d		B	C	T	H1	J	L	H	N	Grease hole	Basic load rating in KN		Limiting speed RPM	Axial movement	Seal seat
	Metric	Imperial										Dynamic	Static			
EXWTV-024	23,81	15/16	25	44	54	12	99	73	122	12	M6	59	62	6300	3,5	42x7
EXWTV-025	25	62/63														
EXWTV-A25	25,4	1														
EXWTV-028	28,57	1 1/8	26	48	60	12	117	84	140	12	M6	81	88	5300	3,5	47x7
EXWTV-030	30	1 2/11														
EXWTV-A30	30,16	1 3/16														
EXWTV-032	31,75	1 1/4	28	50	60	12	130	93	156	13	M6	88	100	4800	3,5	52x7
EXWTV-A35	34,9	1 3/8														
EXWTV-035	35	1 17/45														
EXWTV-037	36,51	1 7/16	28	51	62	12	144	98	172	14	M6	95	105	4500	3,5	62x7
EXWTV-038	38,1	1 1/2														
EXWTV-040	40	1 23/40														
EXWTV-043	42,86	1 11/16	32	57	69	12	149	106	179	16	M6	100	120	4000	4	62x7
EXWTV-044	44,45	1 3/4														
EXWTV-045	45	1 3/4														
EXWTV-049	49,2	1 15/16	34	60	73	12	157	114	189	18	M6	120	140	3800	4	72x7
EXWTV-050	50	1 31/32														
EXWTV-051	50,8	2														



EXWEV 2-Bolt ound flange bearing

Single row spherical roller bearing with set screw mounting



See **tabs below** for more types!

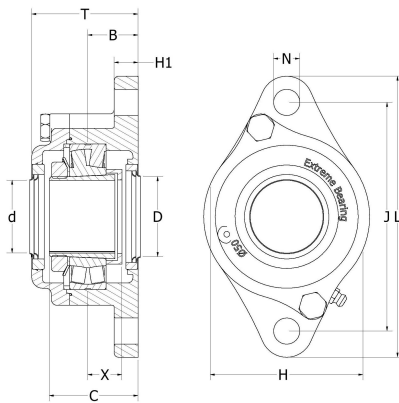
Typ	d		B	C	T	H1	J	L	H	N	Grease hole	Basic load rating in KN		Limiting speed RPM	Axial movement	Seal seat
	Metric	Imperial										Dynamic	Static			
EXWEV-024	23,81	15/16	25	44	54	12	99	73	122	12	M6	50	55	6300	3,5	42x7
EXWEV-025	25	62/63														
EXWEV-A25	25,4	1														
EXWEV-028	28,57	1 1/8	26	48	60	12	117	84	140	12	M6	68	78	5300	3,5	47x7
EXWEV-030	30	1 2/11														
EXWEV-A30	30,16	1 3/16														
EXWEV-032	31,75	1 1/4	28	50	60	12	130	93	156	13	M6	77	88	4800	3,5	52x7
EXWEV-A35	34,9	1 3/8														
EXWEV-035	35	1 17/45														
EXWEV-037	36,51	1 7/16	28	51	62	12	144	98	172	14	M6	80	95	4500	3,5	62x7
EXWEV-038	38,1	1 1/2														
EXWEV-040	40	1 23/40														
EXWEV-043	42,86	1 11/16	32	57	69	12	149	106	179	16	M6	83	102	4000	4	62x7
EXWEV-044	44,45	1 3/4														
EXWEV-045	45	1 3/4														
EXWEV-049	49,2	1 15/16	34	60	73	12	157	114	189	18	M6	102	125	3800	4	72x7
EXWEV-050	50	1 31/32														
EXWEV-051	50,8	2														

See **tabs below** for more types!



EXWP 2-Bolt round flange bearing

Double spherical roller bearing for radial in combination with axial force



See **tabs below** for more types!

The axial load depends on the radial load and how the load occur, impact or continuous load, temperature, speed and etcetera. It is quite complicated to made this calculation. Please feel free to [contact us](#) with your questions.

Typ	d		D		B	C	T	H1	J	L	H	N	Grease hole	Basic load rating in KN		Limiting speed RPM	Axial movement	Seal seat
	Metric	Imperial	Metric	Imperial										Dynamic	Static			
EXWEV-024	23,81	15/16	28,57	1 1/8	25	44	54	12	99	73	122	12	M6	50	55	6300	3,5	42x7
EXWEV-025	25	62/63	28,57	1 1/8														
EXWEV-A25	25,4	1	28,57	1 1/8														
EXWEV-028	28,57	1 1/8	34,9	1 3/8	26	48	60	12	117	84	140	12	M6	68	78	5300	3,5	47x7
EXWEV-030	30	1 2/11	34,9	1 3/8														
EXWEV-A30	30,16	1 3/16	34,9	1 3/8														
EXWEV-032	31,75	1 1/4	38,1	1 1/2	28	50	60	12	130	93	156	13	M6	77	88	4800	3,5	52x7
EXWEV-A35	34,9	1 3/8	38,1	1 1/2														
EXWEV-035	35	1 17/45	38,1	1 1/2														
EXWEV-037	36,51	1 7/16	45	1 3/4	28	51	62	12	144	98	172	14	M6	80	95	4500	3,5	62x7
EXWEV-038	38,1	1 1/2	45	1 3/4														
EXWEV-040	40	1 23/40	45	1 3/4														
EXWEV-043	42,86	1 11/16	50,8	2	32	57	69	12	149	106	179	16	M6	83	102	4000	4	62x7
EXWEV-044	44,45	1 3/4	50,8	2														
EXWEV-045	45	1 3/4	50,8	2														
EXWEV-049	49,2	1 15/16	55	2 1/6	34	60	73	12	157	114	189	18	M6	102	125	3800	4	72x7
EXWEV-050	50	1 31/32	55	2 1/6														
EXWEV-051	50,8	2	55	2 1/6														

See **tabs below** for more types!

